

Oil Pipelines/Water Pipeline Crawling Robot for Leakage Detection/Cleaning of Pipes

Shyam Lal Sharma¹

¹ Al Falah School of Engineering and Technology

Received: 13 December 2013 Accepted: 1 January 2014 Published: 15 January 2014

Abstract

Drive control system plays important roles in pipeline robot. In order to inspect the flaw and corrosion of seabed crude oil pipeline, an original mobile pipeline robot with crawler drive unit, power and monitor unit, central control unit, and ultrasonic wave inspection device is developed. Considering the limited space, a compact hardware system is designed based on an ARM processor with controllers. With made-to-order protocol for the crawl robot, an intelligent drive control system is developed. The implementation of the crawl robot demonstrates that the presented drive control scheme can meet the motion control requirements of the underwater pipeline crawl robot.

Index terms— robot, drive control system, RF technology, RFID device, antenna,

1 I. Introduction

Robots have become important over a wide range of applications—from manufacturing, to surgery, to the handling of hazardous materials. Consequently, it's important to understand how they work, and what problems exist in designing effective robots. A robot is an automatically guided machine which is able to do tasks on its own, almost always due to electronically-programmed instructions. Mobile robots have the capability to move around in their environment and are not fixed to one physical location. This project presents a dynamic model for a novel pipeline robot which obtains its power from 12V battery. The robot is designed to move both against and with the flowing fluid, which makes it different from conventional solutions, which can only move with the flowing fluid. This bidirectional capability makes it very valuable to many industries, especially the oil and gas industries. This robot includes several novel mechanical features, including novel designs for its chassis and energy-dense power transmission to enable high-speed crawling.

Industrial ductwork has been widely used in metallurgy, petroleum, chemical engineering, water supply and other special professions. The formidable work environment makes pipelines easy to be eroded or fatigued which can lead to leaking accident, so the periodic maintenance and overhaul are necessary for industrial pipelines. Absence of fresh air makes it impossible for humans to perform maintenance task.

As maintenance of these pipelines is nearly impossible from outside we need a machine that can crawl inside these long pipes. The crawling robot can be wirelessly steered into the long pipelines. The embedded cameras will use the complete inside picture of a long pipeline, which would help us, detect and fix the leakages or any other technical problems. The above Robot can also be used for cleaning of the pipelines.

Currently, in-pipe robot with tether, which enables the robot to have the enough energy supplies and promptly make up the power loss, still has important application value owing to avoid carrying heavier energy devices, but the noticeable friction forces of tether restrict the traction force of robot, locomotion distance away from entrance, and the steering inside pipelines with elbows. Therefore, the development of autonomous in-pipe locomotion robot without tether becomes urgent, such that the robot can be adaptive to the work of long and complicate pipeline.

One of the key techniques to develop in-pipeline locomotion robot is electrical drive. More driving spots, more flexible action, lower power consumption and other special requirements are making the motor driving technique

45 very challengeable. Based on simulation prototype of in-pipe robot driven by wheels for inspection the inner
46 surface of seabed pipelines, this project focuses on the drive control system of its engineering prototype without
47 tether, including design drive control system based on engineering requirements, hardware design of the control
48 system, intelligent crawling control and experiments.

49 2 II. Objective

50 Although the appearance and the capabilities of robots vary vastly, all robots share the feature of a mechanical,
51 movable structure under some form of control. Designing a robot chassis will be the first objective of this project.
52 The Control of robot involves three distinct phases: -perception, processing and action. Generally sensors/or
53 command receivers are preceptors mounted on the robot, processing is done by the on-board microcontroller,
54 and the task is performed using motors or with some other actuators. We need to design a wireless circuit which
55 helps robot climb on the pole, can be controlled using wireless

56 3 H

57 technology like RF technology. We need to design a controller and a power transmission system. We also need
58 to design a wireless video transmission system.

59 4 III.

60 5 Motivation

61 The making of a pipeline crawling robot and planning its responses against the signals captured from its onboard
62 video camera supposes an excellent incentive for student's learning. The observe defect is that once the problem
63 is stated, the student himself sets out challenges to surpass his talent and abilities in order to expand the robot
64 with new sensors and actuators that may improve its behavior.

65 Compared to other conventional mobile robots used for teaching, Oil pipeline crawling robot incorporates
66 sophisticated and diverse elements, to design the circuit, chassis and remote control via cable or via RF. It is a
67 complete package for learning in the design of hardware-software systems, including the design of communication
68 interfaces, adapters, power circuits, signal transmitters etc.

69 6 IV. Project Overview

70 For years, engineers and owners of pressurized pipelines have been seeking better ways to monitor the condition
71 of buried pipes. In lieu of exposing pipes for inspection, pipeline owners have used various types of remotely
72 controlled probes, cameras, and other devices to obtain information about underground pipes. The oil and gas
73 industries have largely led the charge, driven by regulations and risks associated with catastrophic failures and
74 explosions.

75 Recent developments indicate that petroleum industry techniques can be tailored for municipal applications,
76 such as water distribution pipelines. Robotic systems are offering new capabilities in obtaining real-time data,
77 capturing the attention of budget-conscious owners of aging infrastructure systems. The July explosion of a
78 steam pipeline in New York City provided a wake-up call that buried utility pipes cannot be considered out of
79 sight, out of mind.

80 Here we designed a robot that can be used for analyzing the conditions of the pipelines and clean them if
81 required. The main components used in this are: DC motor, motor driver, RF transmitter& receiver, 12V battery
82 .Basically, the robot is controlled by a RF based remote that send RF signals to the receiver i.e. installed on the
83 robot.

84 Our prototype of 'Pole Climbing Robot' has the capability to move inside the pipes and perform the desired
85 task smoothly. For moving inside pipes, robot wheel based chassis is developed. Enough pressure should be
86 applied on wheels to create sufficient friction to hold the robot on its place.

87 V.

88 7 Description of Working

89 The major concepts/components used in this project are RF technology, motor driver, Chassis-

90 8 H

91 designing, power circuit and power transmission etc. We designed an RF based control system to control Robot.
92 The signal get generated and transmitted with the help of antenna, provided on it. Now the receiving section
93 which we already installed on the robot will receive the signals and send the received signals to the motor drive,
94 on the basis of which motor driver will drive the robot and robot climb on the pole.

95 Radio Frequency is a flexible technology that is convenient, easy to use, and well suited for automatic operation.
96 It combines advantages not available with other technologies. It can be supplied as read-only or read/write, does
97 not require contact or line-of-sight to operate, can function under a variety of environmental conditions, and
98 provides a high level of data integrity. In addition, because the technology is difficult to counterfeit, RFID

99 provides a high level of security. Radio waves transfer data between an item to which an RFID device is attached
100 and an RFID reader.

101 The device can contain commands for robot. RF technology uses frequencies within the range of 50 kHz to
102 2.5 GHz. An RFID system typically includes the following components:

103 ? An RF devices (transponder or tag) that contains data about an item/location

104 ? An antenna used to transmit the RF signals between the reader and the RFID device

105 ? An RF transceiver that generates the RF signals

106 ? A reader that receives RF transmissions and passes the data to a host system for processing. To control
107 robot a remote is designed which has a number of switches on its control board. As soon as you press any button
108 it transmits signals that are received by receiving section then it decodes it and on the basis of signals, motion
109 takes place in the robot like forward, backward. Robot receives this signal with the help of antenna present on
110 the head of the robot.

111 9 VI. Block Diagram

112 ? Device:

113 ? Remote Control:

114 10 VII. Description

115 The constructed robot is designed in such a way that it can move in pipe very efficiently having a given range of
116 diameter. The robot is RF controlled. The complete working of RFI based system can be divided in the following
117 blocks for easier understanding: a) Components list b. RECEIVER This receiver type is good for data rates
118 up to 4800bps and will only work with the 434MHz transmitter. Multiple 434MHz receivers can listen to one
119 434MHz transmitter. This wireless data is the easiest to use, lowest cost RF link we have ever seen! Use these
120 components to transmit position data, temperature data, even current program register values wirelessly to the
121 receiver. These modules have up to 500 ft range in open space. The receiver is operated at 5V. We have used
122 these modules extensively and have been very impressed with their ease of use and direct interface to an MCU.
123 The theory of operation is very simple. A micro switch, also known as snap-action switch, is a generic term used
124 to refer to an electric switch that is actuated by very little physical force, through the use of a tipping-point
125 mechanism. They are very common due to their low cost and durability, greater than 1 million cycles and up
126 to 10 million cycles for heavy duty models. This durability is a natural consequence of the design. Internally a
127 stiff metal strip must be bent to activate the switch. This produces a very distinctive clicking sound and a very
128 crisp feel. When pressure is removed the metal strip springs back to its original state. Common applications of
129 micro switches include the door interlock on a microwave oven, leveling and safety switches in elevators, vending
130 machines, and to detect paper jams or other faults in photocopiers. Micro switches are commonly used in tamper
131 switches on gate valves on fire sprinkler systems and other water pipe systems, where it is necessary to know if a
132 valve has been opened or shut.? HT12 E ? HT12D ? L293D ? DC MOTOR ? RF MODULES(434 MHz) i. RF
133 Transmitter Unit

134 The defining feature of micro switches is that a relatively small movement at the actuator button produces
135 a relative large movement at the electrical contacts, which occurs at high speed (regardless of the speed of
136 actuation). Most successful designs also exhibit hysteresis, meaning that a small reversal of the actuator is
137 insufficient to reverse the contacts; there must be a significant movement in the opposite direction. Both of these
138 characteristics help to achieve a clean and reliable interruption to the switched circuit.

139 11 ? DECODER

140 This part decrypts the data to yield the 4-bit data. This data is fed into the circuit. HT12D has been used here
141 which is compatible with HT12E module. The output is the 4 bit data format. ? POWER SUPPLY BLOCK
142 This consist of a 12V power supply source and a power regulator (7805) to get 5v power supply.

143 12 b) Component Details i. RF Module

144 Radio Frequency Module is an integral part of boarder security system together with a control module or unit
145 and an antenna it is used for wireless identification. Main tasks of the RF module are to send an energizing
146 signal via the antenna. The RF module delivers a digital data stream and a clock signal for further processing to
147 its control unit or module. Furthermore a field strength dependent digital output is available for synchronization
148 purposes. The RFM is tuned to resonance with the antenna by adjusting the inductance of the tuning coil at the
149 RFM's output stage. RF Module can be categorized into two parts:? Transmitter ? Receiver a.TRANSMITTER

150 This wireless data is the easiest to use, lowest cost RF link we have ever seen! Use these components to
151 transmit position data, temperature data, and even current program register values wirelessly to the receiver.
152 These modules have up to 500 ft range in open space. The transmitter operates from 2-12V. The higher the
153 Voltage, the greater the range -see range test data in the documents section. We have used these modules
154 extensively and have been very impressed with their ease of use and direct interface to an MCU. The theory
155 of operation is very simple. This is an ASK transmitter module with an output of up to 8mW depending on
156 power supply voltage. The transmitter is based on SAW resonator and accepts digital inputs, can operate from

157 2 to 12 Volts-DC, and makes building RF enabled products very easy. Micro switches are applied in appliances,
 158 machinery, industrial controls, vehicles, and many other places for control of electrical circuits. Micro switches
 159 are usually rated to carry current in control circuits only, although some switches can be directly used to control
 160 small motors, solenoids, lamps, or other devices. Micro switches may be directly operated by a mechanism, or
 161 may be packaged as part of a pressure, flow, or temperature switch, operated by a sensing mechanism such as a
 162 Bourdon tube. A motor driven cam and one or more micro switches form a timer mechanism. The snap-switch
 163 mechanism can be enclosed in a metal housing including actuating levers, plungers or rollers, forming a limit
 164 switch useful for control of machine tools or electrically-driven machinery.

165 iii. MOTOR DRIVER Here we used L293D to drive the motors. whatever signals it receives from the on the
 166 basis of that it will drive the motors.

167 13 a. DC MOTOR

168 A direct current (DC) motor is a fairly simple electric motor that uses electricity and a magnetic field to produce
 169 torque, which turns the motor. At its most simple, a DC motor requires two magnets of opposite polarity and
 170 an electric coil, which acts as an electromagnet.

171 The repellent and attractive electromagnetic forces.

172 14 VIII.

173 Background of the Robot and Hardware Design of the Control System a) Introduction of the crawling robot

174 In order to inspect the seabed petroleum pipelines of Oil Field, a robot is developed. The overall length of
 175 pipeline is long range, and the inner diameter of the pipe is greater than 8 inches. In order to locate the pipe
 176 defects, the inspection process is divided into two steps: firstly, the oil differential pressure drive type and the
 177 supersonic inspection principles are utilized to realize the on-line inspection; secondly, based on the information
 178 of first step, using the in-pipe robot completes the real-time localization inspection. This project is belonged to
 179 the second step, and the main technique indexes are:

180 ? Normal crawling speed is optimum.

181 ? Driving wheels can adapt to various diameters of the pipelines automatically.

182 ? The robot can operate in water with 2MPa pressure safely.

183 Based on the design indexes, motors and their drivers should be smaller and better performance. As shown
 184 in Figure 1, the in-pipe robot inspection system contains ten units, including crawler unit, drive unit, central
 185 controller unit, battery unit and ultrasonic inspect unit, etc. The drive control system receives motion commands
 186 and drives the robot forward and backward. The magnets provide the torque that causes the DC motor to turn.
 187 shown in The control system has an advantages of high communicating efficiency, reliable, stable, and easy
 188 to set up, which makes it feasible to the 4D (Dull, Dirty, Difficult and Dangerous) workplace like in-pipe
 189 inspection. Considering space limitation and low energy cost, an ARM processor. The drive control system is The
 190 fundamental function of crawling control system is communication between crawling units and central controller.
 191 Generally, crawling drive unit executes the command from central controller and reports its operational results in
 192 time. The software of drive control system is developed with ADS1.2 and mainly consists of CAN communication,
 193 locomotion control, and current detection. Figure ?? shows the workflow of drive control of the robots.

194 ? CAN communication: When the system is electrified, drive control system begin self-testing, and successful
 195 self-testing result will be reported to the central controller which means the following work can run, otherwise
 196 system default. Among the following work, drive control system will keep communicating with other nodes to
 197 guarantee its teamwork.

198 ? Locomotion control: Locomotion control is the key job of drive control system. Actions of the robots
 199 include locking, unlocking, micro-locking, microunlocking, crawling forward, crawling backward, pause crawling,
 200 stop crawling, accelerating and decelerating. The locking state of the mechanism is related to the maximum drive
 201 force, so the microlocking is designed to insure the best locking of the mechanism. After the successful locking
 202 of the mechanism, drive control system will carry out the appropriate locomotion. Among the crawling job, soft
 203 start-up, slope speed setting, and soft stoppage are considered to make the motion more reasonable.

204 ? Current inspection: Current detection for locking motor is helpful to realize the best locking gesture, protect
 205 motors, and achieve the three crawl modes, namely, unification drive mode, grouping drive mode and independent
 206 drive mode. The three drive models are design to make the robot adapt to the straight, curved and slope pipelines.

207 15 H

208 16 IX. Applications

209 This locomotion can be used in various applications; some of them are as follows:

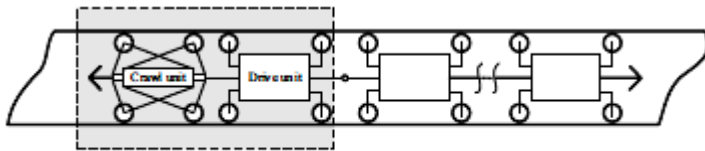
210 ? Pipeline maintenance work ¹

¹© 2014 Global Journals Inc. (US)



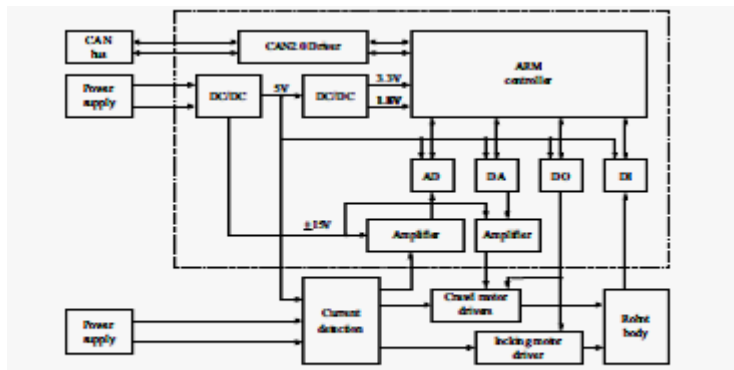
4

Figure 1: This 4



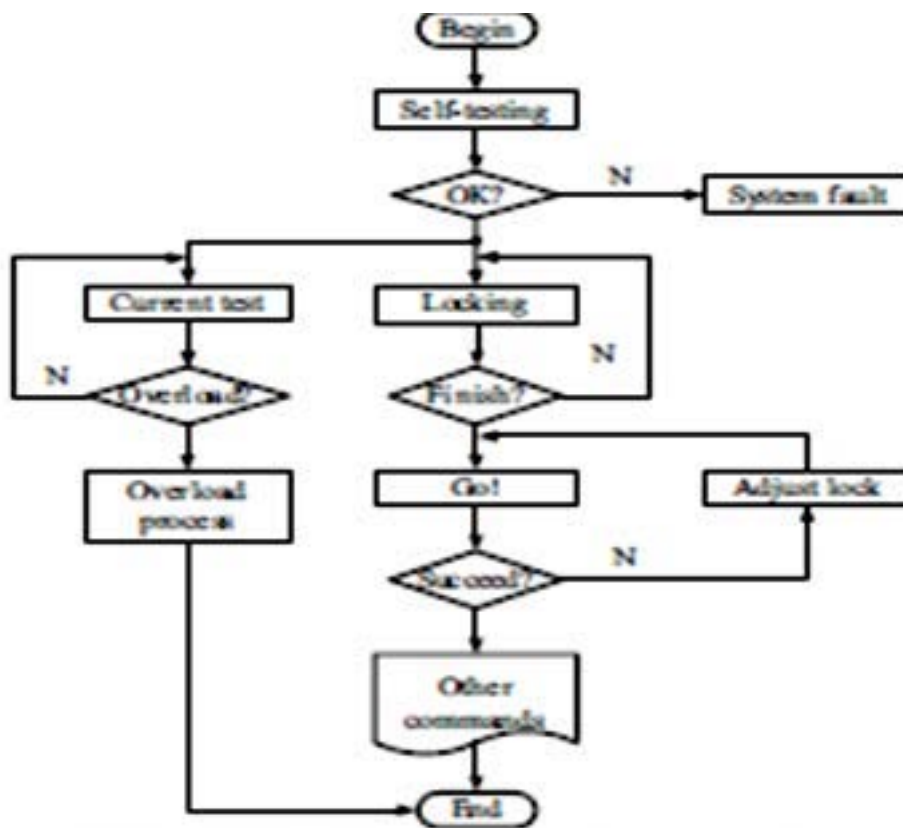
434

Figure 2: Features ? 434



434

Figure 3: Features ? 434



2

Figure 4: Figure 2 .H

Year 2014
 32
 I Version I
 Volume XIV Issue

[Note: © 2014 Global Journals Inc. (US)]

Figure 5:

Oil Pipelines/Water Pipeline Crawling Robot for Leakage Detection/Cleaning of Pipes
? RECIEVER

It receives the encrypted data in form of RF
waves and converts it into

electronic
sig-
nals.
The

receiver used here is ASK 434 MHz RF-Rx modules.

Year 2014

34

I Version I

Volume XIV Issue

Global Journal of Researches in Engineering () H

© 2014 Global Journals Inc. (US)

Figure 6:

211 .1 This page is intentionally left blank

- 212 [Vaskoe Technologies Private and Limited] , Vaskoe Technologies Private , Limited . <http://www.waayoo.com>
213 com
- 214 [Zhou et al. ()] , X Zhou , X H Zhang , Z Q Deng , F E Zhang . 1998 Robot 11271.
- 215 [Deng et al. ()] , Z Q Deng , J Chen , S Y Jiang , S C Wang , D C Sun , S H Zhang . *High Technology Letters*
216 2004. 9 p. 54.
- 217 [Shi ()] , J Shi . *System Design of CAN Bus* 2004. National Defence Industry Press.
- 218 [Lei et al. ()] , X J Lei , Z Fu , Q X Cao , Y Z Zhao . 2005 Robot 27252.
- 219 [Horodincea et al. ()] ‘A simple architecture for in-pipe inspection robots’. M Horodincea , I Doroftei , E Mignon
220 , A Preumont . *Int. Colloquium on Mobile and Autonomous Systems* 2002. 10 p. .
- 221 [Nickols et al. ()] ‘An ultrasonically controlled autonomous model submarine operating in a pipe environment’. F
222 Nickols , R Bradbeer , S Harrold . <http://www.quanser.com> *Proceedings of 4th International Conference*
223 *on Mechatronics and Machine Vision in Practice,(M2 VIP97)*, (4th International Conference on Mechatronics
224 and Machine Vision in Practice,(M2 VIP97)) 1997. 2009. Quanser. p. .
- 225 [Grigg ()] ‘Assessment of Water Distribution Pipes’. N Grigg . *Infrastructure Systems* 2006. 12 (3) p. .
- 226 [Bradbeer et al. ()] R Bradbeer , S Harrold , B Luk , Y Li , L Yeung , H Ho . *A mobile robot for inspection of*
227 *liquid* *References Références Referencias*, 2000.
- 228 [Chen et al. ()] J Chen , Z Q Deng , S Y Jiang . *Proc. Int. Conf. Robot. Biomim. (Shenyang)*, (Int. Conf. Robot.
229 Biomim. (Shenyang)) 2004. NJ: Institute of Electrical and Electronics Engineers Computer Society. p. 119.
- 230 [Roh and Choi ()] ‘Differential-drive in-pipe robot for moving inside urban gas pipelines’. S Roh , H Choi . *IEEE*
231 *Transactions on Robotics* 2005. 21 (1) p. .
- 232 [Figure 3 : Workflow of the crawling control] *Figure 3 : Workflow of the crawling control*,
- 233 [Ang et al. ()] ‘PID control system analysis, design, and technology’. K Ang , G Chong , Y Li , Y Ltd , S
234 Singapore . *Workshop on Service Automation and Robotics*, 2005. 13 p. . City University of Hong Kong
- 235 [Griffiths ()] *Technology and applications of autonomous underwater vehicles*, G Griffiths . 2003. CRC Press.
- 236 [Koji ()] ‘Underwater inspection robot-AIRIS 21’. K Koji . *Nuclear Engineering and Design (Switzerland)* 1999.
237 188 (3) p. .
- 238 [Zhou ()] L Zhou . *Principles and Implication of ARM MCU*, (Beijing) 2005. Beihang University Press.