

Vehicle Anti-Theft and Passenger Safety System

sindurakshak¹ and J. Sam Jeba Kumar²

¹ SRM UNIVERSITY, CHENNAI, INDIA.

Received: 6 December 2013 Accepted: 4 January 2014 Published: 15 January 2014

Abstract

In pursuit of improving the safety of automobile, many companies have invested in developing various systems. Engine Immobiliser is one such innovation. Eventually, the RFID based Engine Immobiliser is becoming prone to getting hacked which compromises the very purpose of the device. Ethical hacker Karsten Nohl of Security Research Labs was able to crack the Hitag 2 car immobiliser algorithm used by Dutch firm NXP Semiconductors in around six hours. The need of the hour is to design an infallible system which enhances the security of the vehicle. We propose a system with a Face Recognition System which replaces the RFID based system. Additionally, a Passive Defense System (PDS) is also implemented that further reduces the chances of vehicle theft. The system also has a Driving Assistant Module (DAM) to help the driver drive in reduced visibility conditions like torrential rainfall, dense fog and the like. Another addition is the alcohol detection which is useful in avoiding drunken driving.

Index terms— engine immobiliser, RFID, encryption, passive defence system, WrisTAS, driving assistant module.

Immobiliser. An RFID immobiliser is a chip embedded in the top part of an ignition key. This chip sends out an encrypted string of radiofrequency signals, basically a particular number of impulses broadcast on various radio frequencies to create a specific code, when the driver inserts it into the ignition-key slot. Without this code, the car either won't start or won't activate the fuel pump.

Early RFID systems, used 32-bit encryption. That means they sent a code of 32 impulses. With 32 bits in the code, there are billions of possible combinations. In newer schemes, including remote starters that let you start a car with the push of a button, the codes have 40 bits, which increases the possibilities. With so many possible codes, the system seems unbeatable (Julia Layton, 2009).

A report published by the United Nations Office on Drugs and Crime (UNODC) in 2011 highlights the large number of Vehicle Theft cases reported in India.

1 Image Acquisition & Processing

Our system involves the use of Face Recognition to authenticate if the driver is allowed to run the vehicle. This can be achieved by comparing the driver's face with pre-stored templates of three people who are authorised to run the vehicle. Our system requires a camera, software where we can carry out the desired image processing techniques and finally where we can achieve the Template Matching operation based on the matching of the template and the image obtained from the camera.

The acquired image is fed to NI LabVIEW with the help of Vision Acquisition Software (VAS), which is an additional toolkit to acquire, save and display images. According to National Instruments India (n. To operate the vehicle in the night, the template match has to be carried out in the dark. The external incident light must have excellent penetration of the skin on the face to perform template matching in the night. Medical studies have shown that near infrared light compared to other bands of light, such as visible light on human skin has strong penetration power and better absorption by haemoglobin so an infrared light supports template matching in the night (Guotian Yang, 2010). According to the research by Yuan and Tang (2011), the 850 nm near infrared

3 STATE MACHINE IMPLEMENTATION

44 light has excellent skin penetration ability, relative to other band infrared light and can be better absorbed by
45 haemoglobin.

46 After the driver's image is acquired, we perform Image Pre-Processing techniques on it using the NI LabVIEW
47 Vision Development Module (VDM). In the Vision Development Module, we convert the 64 bit image to Gray
48 Scale which is a 8 bit image and reduce the Region Of Interest (ROI) to perform the Template Matching operation.

49 If the template match between the pre-stored template and the camera's image is successful, the car starts
50 else it does not.

51 2 III.

52 3 State Machine Implementation

53 Mathworks India (n.d.) states that a State Machine is a model which a finite set of states and behaviors and
54 how the system transitions from one state to another when certain conditions are true.

55 The system first checks if all the doors of the vehicle have been latched and the driver has fastened the seat
56 belt as well. If both the above conditions have been met, the State Machine executes the next state else it does
57 not.

58 After the first state, the State Machine executes the case where the image acquisition process initiates. The
59 driver's image is taken and is compared with the templates already stored in the system. If the template match is
60 successful, the car starts. If the match is not successful in the first attempt the system runs the image acquisition
61 process for an additional ten minutes. However, if the template match is not successful at all, the State Machine
62 executes the Third Party Login.

63 The Third Party Login is a special case aimed to give temporary access to people who do not have their
64 templates stored in the system yet want to run the vehicle. This system becomes very useful in specific cases like
65 when the technician at the repair centre wants to test the car. The Third Party Login is authenticated using a
66 four letter password which only the owner and his family know. The Third Party Login Password can be entered
67 from a remote location as well. If the password matches the car will start else it does not. The salient feature of
68 this system is that in the Third Party Access mode, the vehicle runs for a duration of one hour two times a day
69 only. After the expiry of the allowed time, the vehicle automatically comes to a halt. Further, the system also
70 provides scope for a Passive Defence System (PDS) which comes into effect if the primary defence system, the
71 Face Recognition and Authentication system fails to protect the car. The PDS interacts with the vehicle engine
72 with the help of a redundant Controller Area Network Bus (CAN Bus) which gets activated only when the OTP
73 is generated.

74 In case a thief steals the car, there is a separate system which generates a unique One Time Password (OTP).
75 The OTP is mailed to the registered mail id of the owner using Simple Mail Transfer Protocol (SMTP), present
76 in NI LabVIEW. The system also switches on a hidden camera when the OTP is generated. The hidden camera
77 will take a set number of images of the thief without his knowledge. The image of the thief is stored in the
78 memory which can be retrieved later and can be handed later to the concerned authorities. The image of the
79 thief can also be sent to the nearest Police Station.

80 The system enables remote switching of the vehicle's engine off through the NI Data Dashboard App (Version
81 2.2), which helps us to remotely control the vehicle's engine (National Instruments, 2014). This app enables the
82 owner to feed in the Third Party Access password or the One Time Password V.

83 Eliminating Driving while Impaired (dwi) a) Introduction

84 Drinking While Impaired (DWI) is a serious offence which not only risks the driver's life but also of others on
85 the road. Steps have to be taken to eliminate this menace. Most of the system available in the market today
86 can detect whether the driver is drunk before starting the vehicle but they fail if the driver drinks while driving.
87 Thus, if the driver drinks while driving, the vehicle does not stop.

88 In our quest to eliminate the above stated situation we advocate the use of Transdermal Alcohol Sensor (TAS)
89 which tests for alcohol that is excreted through the skin. The two most effective TAS are: ??1980) deduced
90 that there was a statistically significant linear relationship between the concentration of ethanol in sweat and
91 the average concentration of ethanol in blood, also called Blood Alcohol Concentration (BAC). Blood Alcohol
92 Concentration is the amount of alcohol per fixed unit of blood.

93 After evaluating the needs of the system, we have selected the WrisTAS as the Alcohol sensor. The WrisTAS
94 uses a constant hydrated platinum electrode maintained at a controlled potential and bathed in aqueous electrolyte
95 held in a reservoir. In the WrisTAS, an electrode oxidizes the ethanol and forms acetic acid that diffuses into the
96 reservoir. The current is converted to a digital signal that is averaged and stored at preset time intervals from
97 30 seconds to 10 minutes. Data can be downloaded to a computer serial port (Marques & McKnight, 2007). We
98 have selected WrisTAS over SCRAM owing to the following reasons:

99 ? Smaller Size of WrisTAS as compared to SCRAM.

100 ? Paced drinking with food may not trigger an alert in SCRAM (Marques & McKnight, 2007).

101 ? WrisTAS continuously scans for the presence of alcohol, while SCRAM does it every half an hour. SCRAM
102 may not be able to protect against Drinking while Driving in all conditions.

103 4 b) WrisTAS Implementation

104 The WrisTAS can be interfaced with the car in a multitude of ways. The first method could be pasting an
105 elongated WrisTAS patch on the steering wheel of the vehicle such that it covers it fully. This method is similar
106 to what the Japanese Automobile giant, Nissan tried in one of its concept car.

107 The other method could be to connect the WrisTAS to the Controller Area Network Bus of the vehicle. When
108 the driver wants to drive the vehicle, he has to wear the module. Marques & McKnight (2007) stated that
109 the device has a skin resistance/conductance sensor and a temperature sensor. These sensors, when operative,
110 can aid in determining if a person removed or blocked the device. When in service, data from the device are
111 periodically downloaded to a computer via a serial port interface into the CAN Bus.

112 The temperature sensor attached to WrisTAS performs a secondary function as well. It checks if someone is
113 trying to trick the Face Recognition and Authentication by uploading two dimensional images of the people in
114 the stored templates into the system directly. Whenever a driver links up with the WrisTAS, the temperature
115 sensor gives a high output. The NI LabVIEW reads the sensor values, if there is a high output the vehicle starts
116 else it keeps rescanning the sensor output.

117 5 The Driving Assistant Module

118 The Driving Assistant Module (DAM) is essentially a range finder module. The Driving Assistant Module will
119 supplement the driver when he or she is driving by providing information about the surroundings of the vehicle.
120 When the driver knows about the obstacles surrounding of the car, the chances of accidents are bound to reduce.
121 The system will be particularly useful while driving in adverse weather conditions like torrential rainfall, dense
122 fog and conditions of reduced visibility like driving in the night.

123 In our prototype, we have used an Ultrasound sensor module to detect obstacles in the surrounding of the
124 car. Ultrasound sensors transmit ultrasonic waves from its sensor head and again receive the ultrasonic waves
125 reflected from an object which is the obstacle (SensorCentral.com, n.d.).

126 By measuring the length of time from the transmission to reception of the sonic wave, it detects the position
127 of the object. The process is shown in Fig. 6. Processing is an open source programming language based on Java
128 language and Integrated Development Environment built for the electronic arts, new media art, and visual design
129 communities with the purpose of teaching the fundamentals of computer programming in a visual context, and
130 to serve as the foundation for electronic sketchbooks (Wikipedia, n.d.). The user interface for the Ultrasound
131 Sensor is made using Processing 2 IDE. Let us consider an example which illustrates the how the distance is
132 calculated using an ultrasound sensor.

133 The sensor sends an ultrasonic ping at a time t_1 and receives the bouncing ping at a time t_2 .

134 If we know the speed of sound, the time difference $\Delta t = t_2 - t_1$, can give us an idea of the distance of the
135 object from the Ultrasound sensor.

136 6 Conclusion

137 The primary focus was to replace the existing RFID based engine immobiliser with a better and foolproof system
138 which was achieved by implementing Face Recognition as the primary defense mechanism against vehicle theft,
139 using NI LabVIEW and its toolkits. A Third Party Access mode also been developed to help people who do
140 not have their templates stored in the system to run the vehicle for a pre-programmed amount of time. The
141 Passive Defense System (PDS), which includes the OTP generation and it's mailing, is also implemented using
142 the State Machine in NI LabVIEW. A Transdermal Alcohol Sensor interface is proposed which adds to the safety
143 of the driver and the surroundings by avoiding Driving in Impaired condition. Apart from these, an ultrasonic
144 sensor based guidance system is also integrated to the vehicle so as to provide a guidance system to the driver
145 during adverse cases such as heavy fog or poor visibility. All these systems work as a package and offers greater
146 passenger safety while reducing the risk of vehicle theft.

147 If $\Delta t = 500 \mu s$, we know it took $250 \mu s$ for the ping to hit the object and another $250 \mu s$ for it to come back
148 and strike the receiver.

149 The approximate speed of sound in dry air is given by the formula: This page is intentionally left blank ^{1 2}

¹© 2014 Global Journals Inc. (US)

²© 2014 Global Journals Inc. (US)Global Journal of Researches in Engineering



Figure 1:

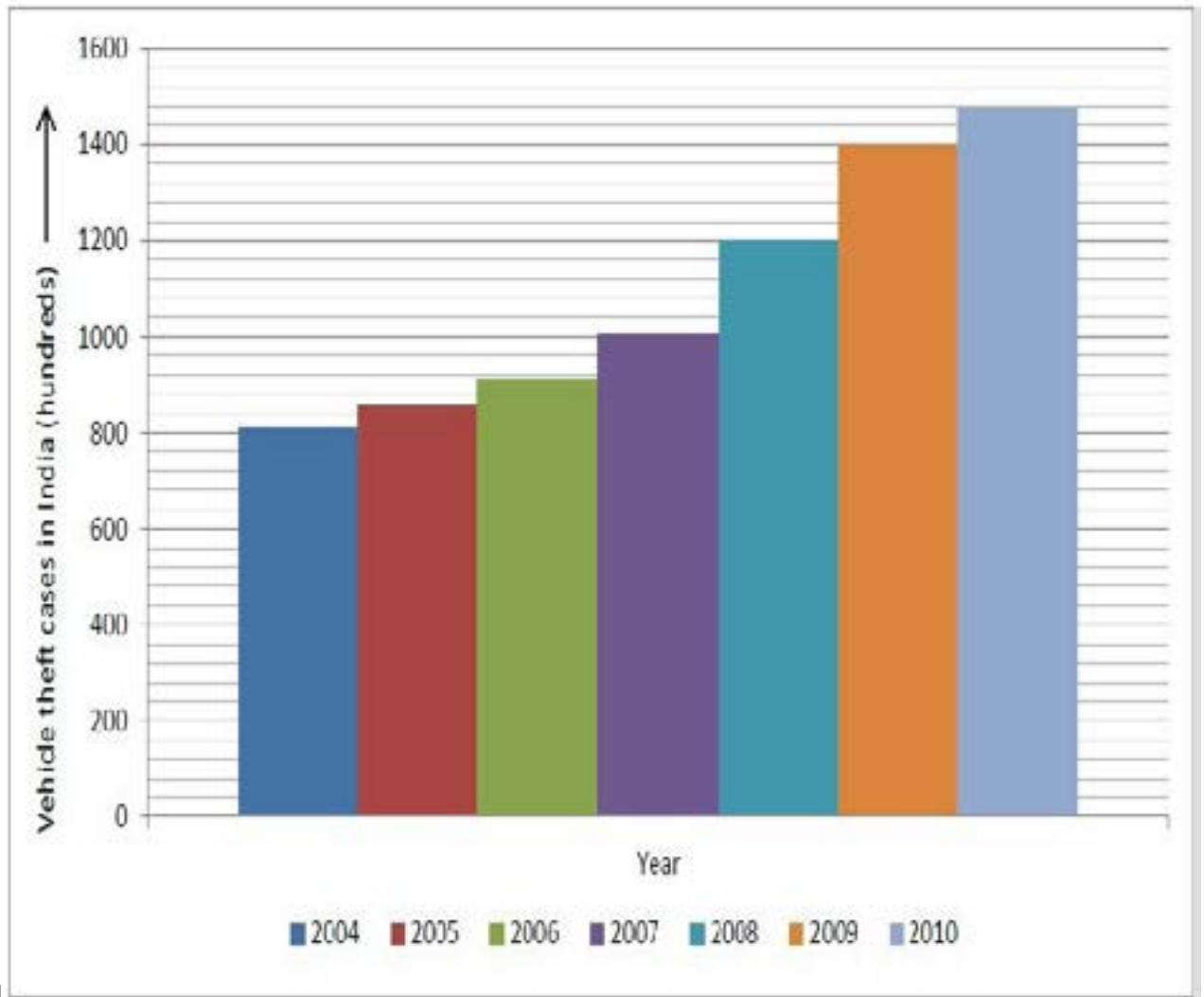


Figure 2: Figure 1 :

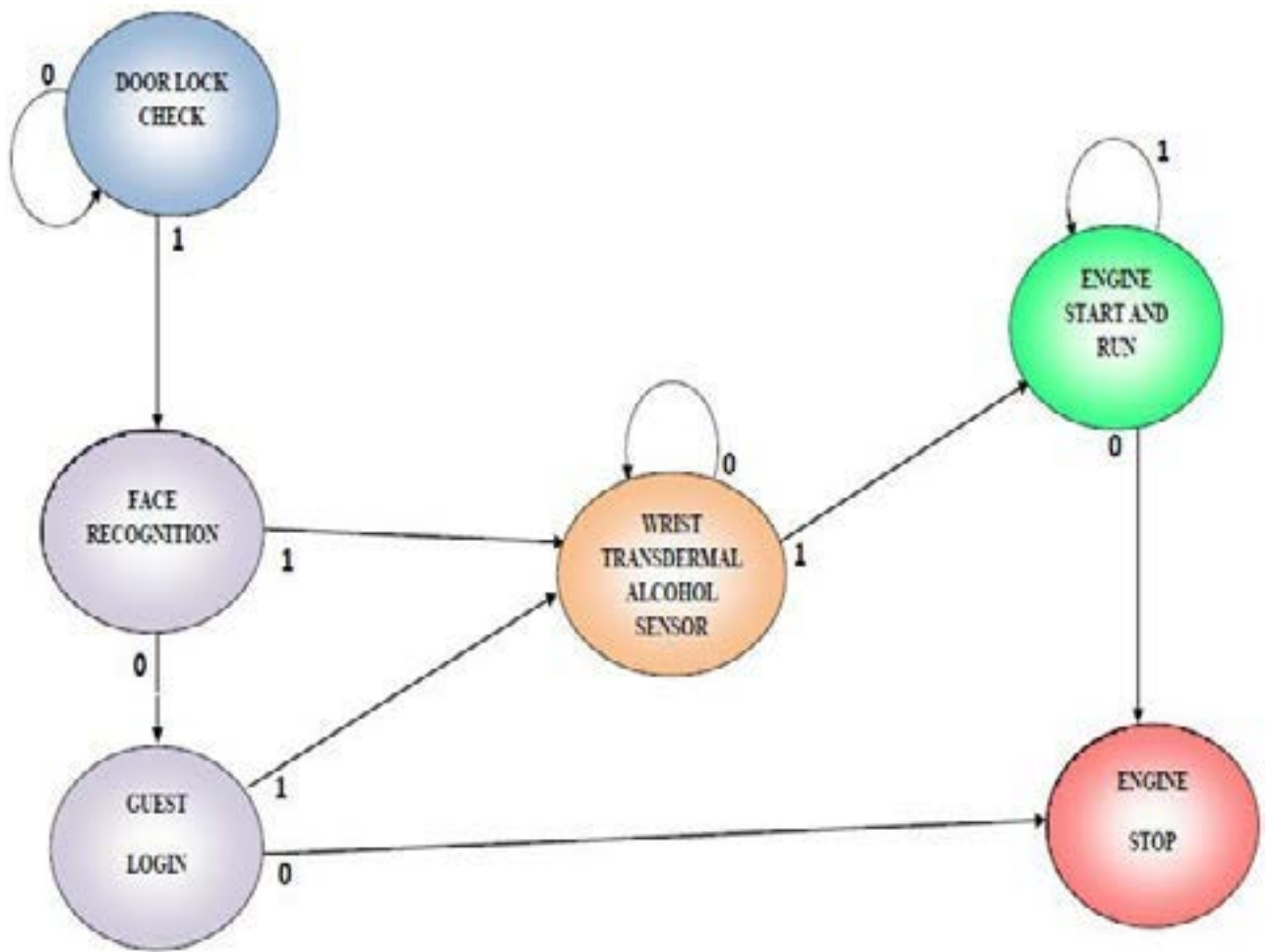
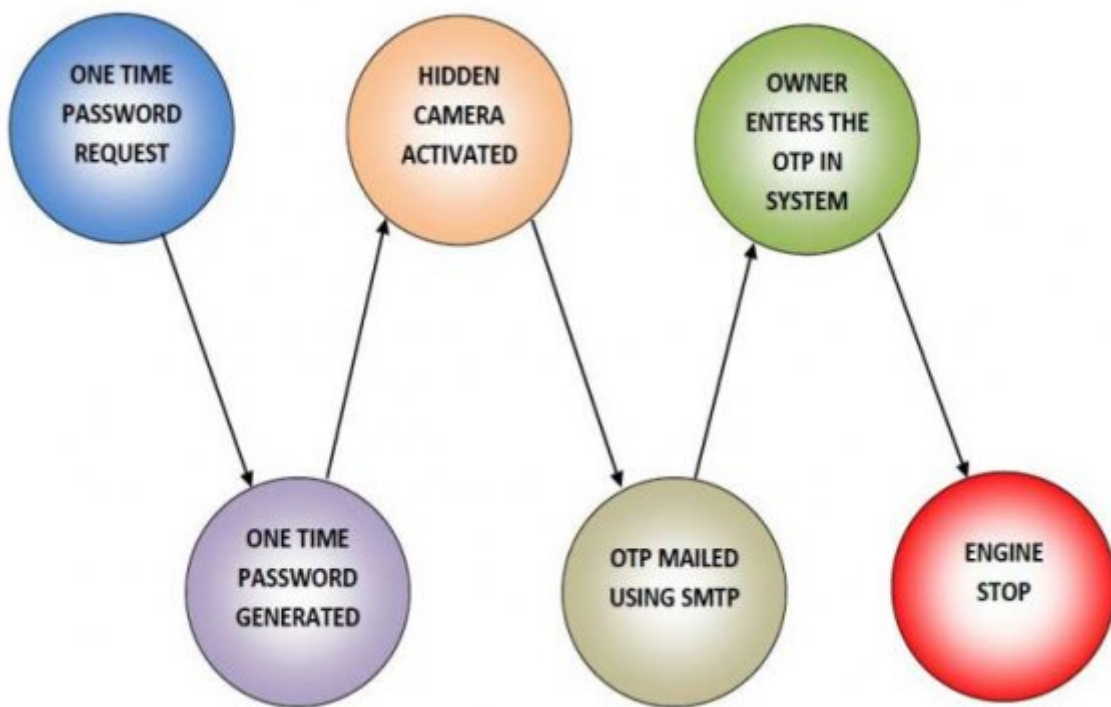
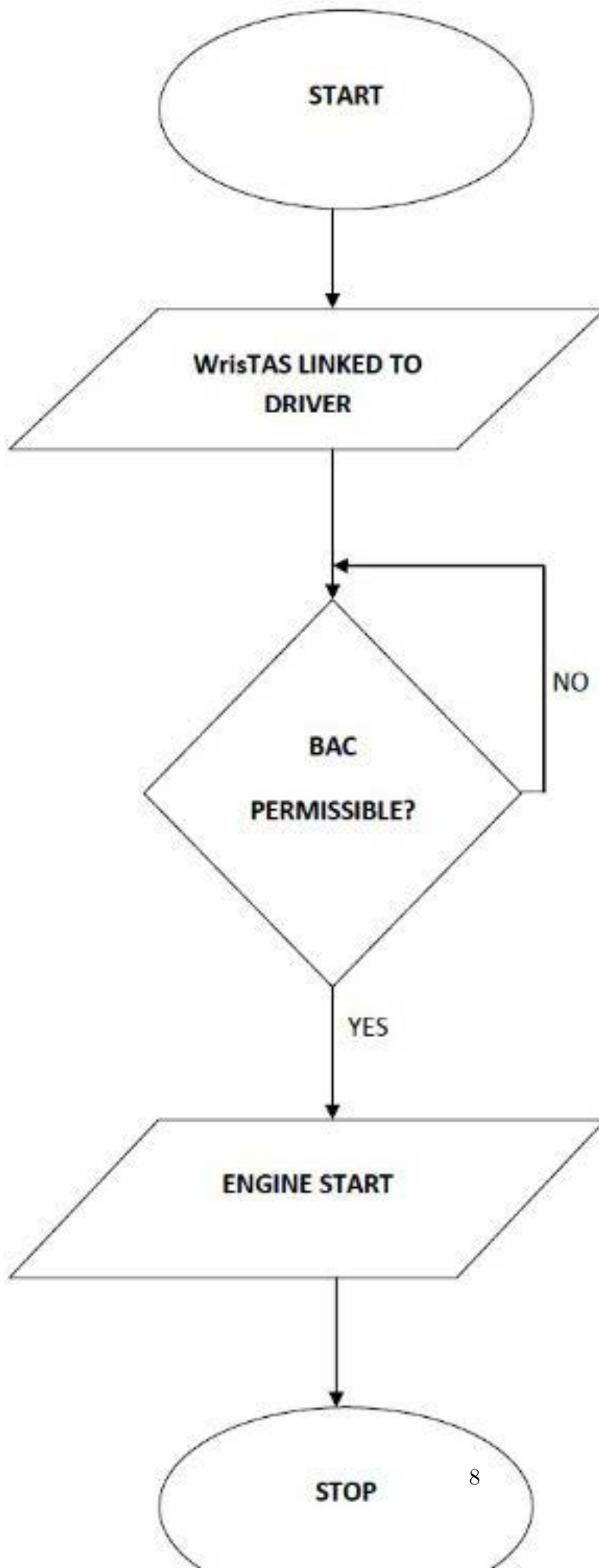


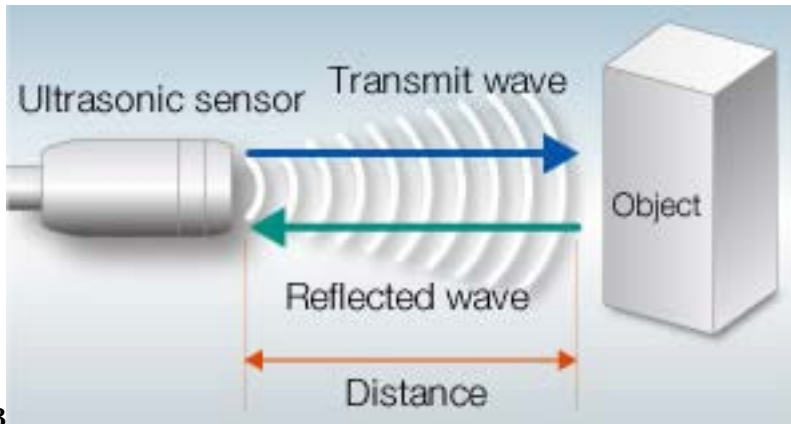
Figure 3:



2

Figure 4: Figure 2 :





3

Figure 6: Figure 3 :



Figure 7:

150 Thus in this particular case the object is at a distance of 8.6 cm from the Ultrasound Sensor.

151 [Robertson and Vanlaar] , Robyn Robertson , Ward Vanlaar , HerbM .

152 [Wikipedia] , Wikipedia . [http://en.wikipedia.org/wiki/-Processing_\(programming_language](http://en.wikipedia.org/wiki/-Processing_(programming_language)

153 [Phillips and Mcaloon ()] ‘A sweat-patch test for alcohol consumption: Evaluation in continuous and episodic

154 drinkers’. M Phillips , M Mcaloon . *Alcoholism: Clinical and Experimental Research* 1980. 4 (4) p. .

155 [Layton ()] *Are RFID ignition systems secure*, Julia Layton . [http://electronics.howstuffworks.com/](http://electronics.howstuffworks.com/gadgets/automotive/rfid-ignition-system.htm)

156 [gadgets/automotive/rfid-ignition-system.htm](http://electronics.howstuffworks.com/gadgets/automotive/rfid-ignition-system.htm) 2009.

157 [Leyden ()] *Car immobilisers easily circumvented by crafty carjackers*, John Leyden . [http://-www.](http://-www.theregister.co.uk/2010/12/20/car_immobiliser_security_flaws/)

158 [theregister.co.uk/2010/12/20/car_immobiliser_security_flaws/](http://-www.theregister.co.uk/2010/12/20/car_immobiliser_security_flaws/) 2010.

159 [Simpson ()] *Continuous transdermal alcohol monitoring: A Primer for criminal justice professionals*, Simpson

160 . 2006.

161 [Yuan and Tang ()] ‘Driver authentication device based on the characteristics of Palm print and Palm Vein’.

162 Weiqi Yuan , Yonghua Tang . *International Conference On Hand-based Biometrics (ICHB)*, (Hong Kong,

163 China) 2011. The Hong Kong Polytechnic University

164 [Marques and Mcknight ()] *Evaluating transdermal alcohol measuring devices*, Paul R Marques , A Scott

165 Mcknight . 2007. 810 p. 875.

166 [Mathworks India ()] <http://www.ni.com/white-paper/14033/en/> *Mathworks India*, 2014. Finite State

167 Machine (html 8. Enhancements to the Data Dashboard for LabVIEW app)

168 [Measurement Principle / Effective Use of Ultrasonic Sensor] *Measurement Principle / Effective Use of Ultra-*

169 *sonic Sensor*, <http://www.sensor-central.com/photoelectric/ultrasonic01.php>

170 [NI Vision Acquisition Software] <http://sine.ni.com/-nips/cds/view/p/lang/en/nid/12892> *NI Vi-*

171 *sion Acquisition Software*,

172 [Yang ()] *Palm vein image acquisition and recognition system research*, Guotian Yang . 2010. Master Dissertation

173 of Shenyang University of Technology

174 [Delehanty ()] ‘Security Issues in Biometric Identification’. Anthony Delehanty . *Proceedings of UMM CSci Senior*

175 *Seminar Conference*, (UMM CSci Senior Seminar Conference Morris, MN) 2011. University of Minnesota

176 [Theft of private cars at the national level, number of police-recorded offences ()] *Theft of private cars at the*

177 *national level, number of police-recorded offences*, 2011. (United Nations Office on Drugs and Crime

178 (UNODC))