



GLOBAL JOURNAL OF RESEARCHES IN ENGINEERING: C  
CHEMICAL ENGINEERING

Volume 14 Issue 3 Version 1.0 Year 2014

Type: Double Blind Peer Reviewed International Research Journal

Publisher: Global Journals Inc. (USA)

Online ISSN: 2249-4596 & Print ISSN: 0975-5861

## Modeling and Output Feedback Distributed Control for an Absorption Packed Column

By M. Selatnia, R. Illoul & M.S. Boucherit

*Ecole Nationale Polytechnique d'Alger, Algeria*

*Summary-* This work consists of modeling, simulation and multiple models control of an industrial absorption packed column designated to remove CO<sub>2</sub>, from natural gas. The multiple models approach is an elegant way of turning nonlinear problems into linear ones. In this paper, we used the output feedback distributed control (ODC) coupled with local linearization of the model of the absorption packed column. We compared the results with those obtained with the traditional PID control and the results were satisfactory.

*Keywords:* multiple models, PDC control, methyldiethanolamine (MDEA) absorption packed column, LMI, Lyapunov function.

*GJRE-C Classification : FOR Code: 090499*



*Strictly as per the compliance and regulations of :*



# Modeling and Output Feedback Distributed Control for an Absorption Packed Column

M. Selatnia <sup>α</sup>, R. Illoul <sup>σ</sup> & M.S. Boucherit <sup>ρ</sup>

**Summary-** This work consists of modeling, simulation and multiple models control of an industrial absorption packed column designated to remove CO<sub>2</sub> from natural gas. The multiple models approach is an elegant way of turning nonlinear problems into linear ones. In this paper, we used the output feedback distributed control (ODC) coupled with local linearization of the model of the absorption packed column. We compared the results with those obtained with the traditional PID control and the results were satisfactory.

**Keywords:** multiple models, PDC control, methyldiethanolamine (MDEA) absorption packed column, LMI, lyapunov function.

## I. INTRODUCTION

The absorption packed column is a physicochemical separation unit largely used in the chemistry industry. It consists of a tube where we send gas mixtures in order to separate one or more compounds from the principal mixture. It is largely used for the separation of acid gases (CO<sub>2</sub>, H<sub>2</sub>S) from natural gas.

The model presented in this paper is a dynamic model of the absorption packed column and consists of a set of non linear partial differential equations; it is elaborated starting from considerations on CO<sub>2</sub> and MDEA mass balance in gas and liquid phases and considers also the energy balance [2]. We finally obtain a non linear distributed parameters system.

Few studies were carried out on modelling and controlling the absorption column. Crosby and Durbin [3] studied the performance of a state controller. Roffel [4] developed a sub-optimal output controller with state inequality constraint. Darwish and Fantin [5] used a decentralized control with pole placement. Petrovsky [6] developed a multivariable PI regulator. Najim [7] developed a self-adjusting regulator in the case of CO<sub>2</sub> absorption by a diethanolamine solution and also multilevel learning control [8]. It took again the problem later on with predictive control [9].

Few studies have also been published concerning the modelling and simulation of CO<sub>2</sub> absorption by aqueous solutions of MEA or MDEA on pilot and industrial columns [10-12].

For the model developed in our study, it seemed interesting for us to use the multiple models approach for the control of the absorption packed

column because it enables us to obtain good performances for complex dynamics processes. We develop in first stage the PID regulation to compare the performances of the classical techniques with the performances of the Takagi-Sugeno multiple model approach.

## II. MODELING AND OPEN LOOP SIMULATION OF THE INDUSTRIAL ABSORPTION PACKED COLUMN

The absorption packed column presented here is located at Khrechba and is part of the In Salah Gaz project [17], it removes CO<sub>2</sub> from natural gas by using an aqueous solution of methyldiethanolamine (MDEA) as a washing liquid. It is a packed type column measuring 8 meter height and 4 meter in diameter with Pall rings to improve the surface of contact between phases. For a better elimination of CO<sub>2</sub> from the natural gas, the liquid flow (water+ MDEA) is counter-current with gas flow. The working pressure and temperature are respectively 71.5 bar at 55°C [2].

At contact between liquid and gas phase occurs on the surface of the Pall rings, CO<sub>2</sub> passes from the gas phase to the liquid phase; this diffusion is accelerated by chemical reaction of CO<sub>2</sub> with the MDEA in the liquid phase. The liquid flow (water+ MDEA) and the CO<sub>2</sub> concentration in the gas mixture are respectively selected as control variable and output variable.



Figure 1 : The absorption packed column of In Salah Gas (ISG)

*Author <sup>α σ ρ</sup> :* Laboratoire De Commande Des Processus Ecole Nationale Polytechnique d'Alger, BP 182 Avenue Hassen Badi, El Harrach. e-mail: mouradselatnia@yahoo.fr

a) Model Equations

In order to simplify the model, the following assumptions are done [2,13]:

- There is no resistance in gas phase
- The reaction between CO<sub>2</sub> and MDEA is fast (Ha>5)
- Axial dispersion is negligible in the gas phase and the liquid phase
- The MDEA does not pass in gas phase

The mass balance on an elementary section dz of the column for CO<sub>2</sub> in the gas phase is written [2,13,14]:

Quantity of aqueous solution at input Z = quantity of aqueous solution at the output (z+dz) + quantity of aqueous solution transferred from the liquid phase to the gas phase + accumulation.

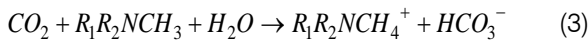
Which gives:

$$(GC_{Ag})_z = (GC_{Ag})_{z+dz} + \varphi S dz + S \frac{dC_{Ag}}{dt} dz \quad (1)$$

Where G (m<sup>3</sup>/s) is the volumetric gas flow,  $\varphi$  the CO<sub>2</sub> flow transferred from the gas phase to the liquid phase, S the section of the column and C<sub>Ag</sub> (mol/m<sup>3</sup>) the CO<sub>2</sub> concentration in the gas phase. Given U<sub>G</sub>=G/S (m/s) the gas flow velocity, we obtain then:

$$U_g \frac{dC_{Ag}}{dz} + \varphi = -\frac{dC_{Ag}}{dt} \quad (2)$$

The chemical reaction between CO<sub>2</sub> and the MDEA is [10-12]:



The reaction rate r<sub>A</sub> has the following form [14,15]:

$$r_A = k C_{AL} C_{BL} \quad (4)$$

Where k is the constant for reaction rate [14,15]:

$$k = 2,9610^5 \exp\left(-\frac{5332.8}{T}\right) \quad (5)$$

CAL is the CO<sub>2</sub> concentration in the liquid phase and CBL the MDEA concentration in the liquid phase. The mass balance for CO<sub>2</sub> in the liquid phase gives finally:

$$\varphi = [k C_{AL} C_{BL}] \quad (6)$$

Which means that the totality of CO<sub>2</sub> transferred to the liquid phase reacts with the MDEA.

The mass balance for the MDEA in the liquid phase gives:

$$(LC_{Bl})_z = (LC_{Bl})_{z+dz} - [k C_{Al} C_{Bl}] S dz - S \frac{dC_{Bl}}{dt} dz \quad (7)$$

Where L is the volumetric liquid flow. By taking account of (5) and noting by U<sub>L</sub> = L/S (m/s) the mean liquid flow velocity, we obtain:

$$U_L \frac{dC_{Bl}}{dz} - \varphi = \frac{dC_{Bl}}{dt} \quad (8)$$

Our absorption packed column is finally described by the following set of partial derivative equations:

$$\begin{cases} U_g \frac{\partial C_{Ag}}{\partial z} + \varphi = -\frac{\partial C_{Ag}}{\partial t} \\ U_L \frac{\partial C_{Bl}}{\partial z} - \varphi = \frac{\partial C_{Bl}}{\partial t} \end{cases} \quad (9)$$

The procedure to compute flow  $\varphi$  is given in [2] according to [14-16].

We have finally to consider the boundary conditions which for gas phase are the CO<sub>2</sub> concentration at the column bottom or input concentration C<sub>Ag</sub>e and for liquid phase the MDEA concentration at the column top or input concentration C<sub>Bl</sub>e.

$$\begin{cases} C_{Ag}|_{z=0} = C_{Ag_e} \\ C_{Bl}|_{z=h} = C_{Bl_e} \end{cases} \quad (10)$$

Chemical reactions within the industrial column induces a strong heat emission and the appearance of a temperature gradient throughout the column; the temperature variation is approximately 5°C between the input and the output of the column, which leads us to establish an energy balance in order to describe the temperature changes which affects the various concentrations along the column [16]:

$$\begin{cases} U_g \frac{\partial T_g}{\partial z} + \frac{a \cdot h_{g/l} (T_l - T_g)}{\left[ \sum_i cp_i^g C_i^g \right]} = \frac{\partial T_g}{\partial t} \\ -U_L \frac{\partial T_l}{\partial z} + \frac{1}{\sum_i cp_i^l C_i^l} \left[ \Delta H_r r_A - a \cdot h_{g/l} (T_l - T_g) \right] = \frac{\partial T_l}{\partial t} \end{cases} \quad (11)$$

With:

- C<sub>i</sub><sup>g</sup>: concentration in gas phase at the interface (mol/m<sup>3</sup>)
- C<sub>i</sub><sup>l</sup>: concentration in liquid phase at the interface (mol/m<sup>3</sup>)
- cp<sub>i</sub><sup>g</sup>: Specific heat in the gas phase at the interface (J/mol.K)
- h<sub>g/l</sub>: coefficient of heat transfer (convection) (J/m<sup>2</sup>.K.s)
- T<sub>l</sub>: Liquid temperature (K)
- T<sub>g</sub>: Gas temperature (K)
- ΔH<sub>r</sub>: enthalpy of the reaction (J/mol)
- cp<sub>i</sub><sup>l</sup>: specific heat in the liquid phase at the interface (J/mol.K)

We finally take into account the boundary conditions for the temperature which are the temperatures for gas and the liquid at the column input.

$$\begin{cases} T_g|_{z=0} = T_{ge}, \frac{\partial T_l}{\partial z}|_{z=0} = 0 \\ T_l|_{z=h} = T_{le}, \frac{\partial T_g}{\partial z}|_{z=h} = 0 \end{cases} \quad (12)$$

b) Model validation

A test was carried out on our industrial absorption column to compare the output CO<sub>2</sub> concentration given by the model with the real one and this for a step input variation of 10 t/h. The data were collected on a horizon of 6800 seconds. The results are grouped in figure 2 where we represent respectively, the flows of MDEA and gas at the output and then the concentrations of CO<sub>2</sub> at the column output either experimental or given by the model [2].

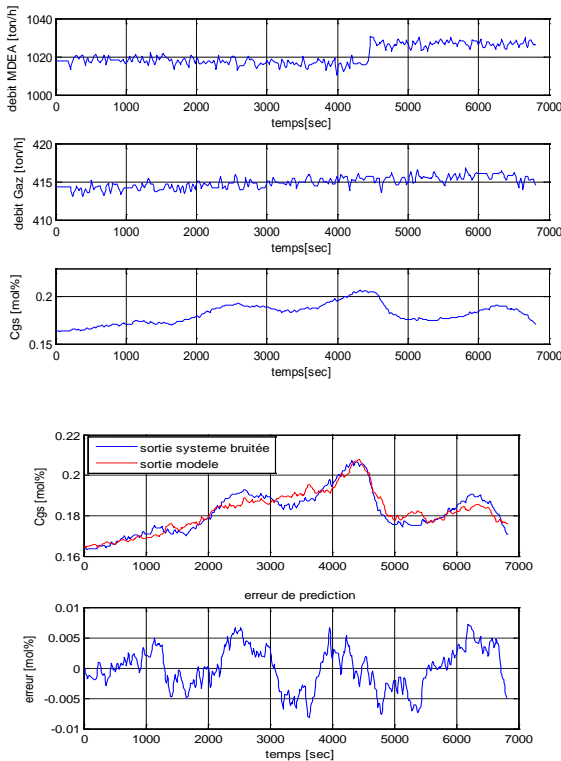


Figure 2 : Output CO<sub>2</sub> Concentrations from the system and the model

We note that the model dynamics of the CO<sub>2</sub> concentration at the column output agree with the experimental results.

c) Open loop Simulation of the industrial column

By considering the equations (2) and (8), the dynamic model of the absorption column is that of a nonlinear, distributed parameters system. The results from open loop simulations are presented in figures 3 and 4.

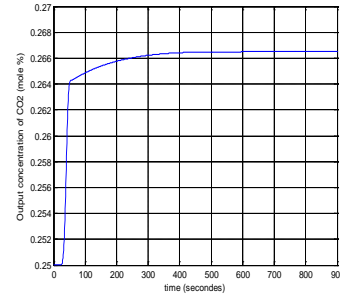
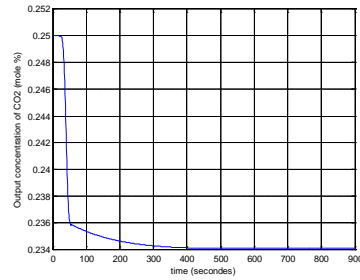


Figure 3 : Output CO<sub>2</sub> Concentration for an input step disturbance of ±5 % on gas concentration

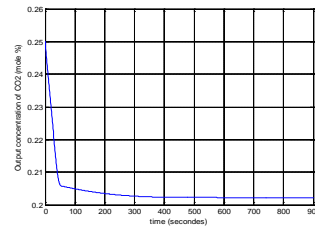
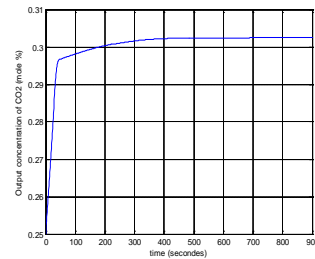


Figure 4 : Output CO<sub>2</sub> Concentration for an input step disturbance of ±10 % on gas flow

Simulations show that the system is stable. It presents a dead time in response to a step input disturbance on the CO<sub>2</sub> concentration due to the gas propagation along the absorption column.

### III. PID REGULATION OF THE INDUSTRIAL ABSORPTION PACKED COLUMN

We apply a PID regulation to the dynamic model of our absorption packed column. We choose a sampled control with a sampling period of 10 seconds. The reference for the input CO<sub>2</sub> concentration is 0.25mole %, which corresponds to a concentration of 7.05 mole CO<sub>2</sub>/m<sup>3</sup>. The parameters of the PID regulator were optimized using trial and error.

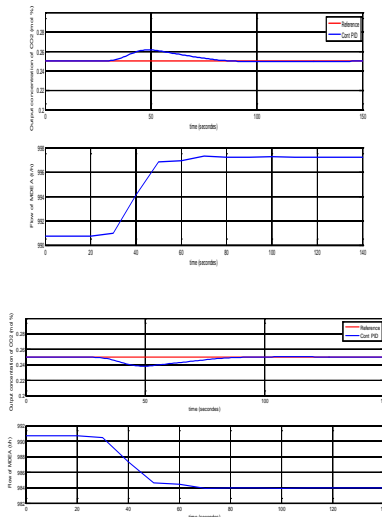


Figure 5 : Output CO<sub>2</sub> Concentration and washing liquid flow for an input step disturbance of ±5 % on gas concentration

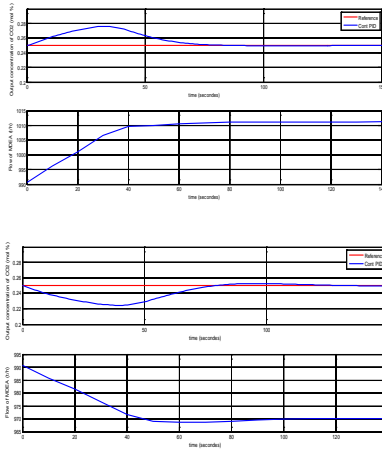


Figure 6 : Output CO<sub>2</sub> Concentration and washing liquid flow for an input step disturbance of ± 10 % on gas flow

The simulation results are satisfactory; the PID regulator cancels the permanent error and ensures a quick response due to the derivative action. The regulation shows a net asymmetrical behaviour between responses to positive and negative step input disturbances due to the strong non linearity of the relationship between the input and the output

#### IV. MULTIPLE MODELS CONTROL OF THE INDUSTRIAL ABSORPTION PACKED COLUMN

##### a) Introduction

The multiple models is a non linear modeling technique which allows to achieve a good compromise between precision and model complexity. In the light of the numerous work related to it in recent years [18],

[19], [20], it arises a great interest, especially in applications dealing with simulation and control. It can also be seen as a particular fuzzy modeling technique [21], [22], corresponding to a Takagi Sugeno (TS) approach [23]. A TS model is a composed of a finite number of linear models connected with non linear functions called membership functions and verifying the convex mapping property (i.e. they are non negative and their sum is equal to 1). It allows us to solve various problems of control, observation and diagnosis for non linear systems with linear techniques.

The approach associated with multiple models in control is known as the Parallel Distributed Compensation (PDC) [24]. This method is based on a set of linear controllers designed for each linear model, and stability of the overall closed loop is guaranteed via a Lyapunov function common to all the linear models.

In this paper, we identify the absorption packed column as a multiple model of the TS type and proposes a control based on Output feedback Distributed Control (ODC).

##### b) Problem formulation

###### i. The Multiple model approach

The multiple models have three basic structures: Coupled states (TS), uncoupled states [25] and hierarchical structure. The coupled states Structure (TS) is the most popular in the analysis and synthesis of the multiple models. It is written in the following form:

$$\begin{cases} \dot{x}(t) = \sum_{i=1}^M \mu_i(z(t)) (A_i x(t) + B_i u(t)) \\ y(t) = \sum_{i=1}^M \mu_i(z(t)) C_i x(t) \end{cases} \quad (13)$$

$x(t) \in R^n$  being the state vector,  $u(t) \in R^m$  the input vector,  $y(t) \in R^p$  the output vector  $z(t) \in R$  is the decision variable or premises and the matrices  $A_i \in R^{n \times n}$ ,  $B_i \in R^{n \times m}$ , et  $C_i \in R^{p \times n} \forall i = 1, \dots, M$  are constant and supposed to be known.

The activation function or membership function  $\mu_i(z(t))$  determines the degree of activation of the  $i^{th}$  local model. It allows a progressive passage from this model to the other close local models. These functions can depend of the measurable variables of the system (the input and output signals) or of the non measurable variables of the system (the states). They can be of triangular or Gaussian form and satisfy the properties of convex mapping:

$$\begin{cases} \dot{x}(t) = \sum_{i=1}^M \mu_i(z(t)) (A_i x(t) + B_i u(t)) \\ y(t) = \sum_{i=1}^M \mu_i(z(t)) C_i x(t) \end{cases} \quad (14)$$

The multiple models can be viewed as universal approximators since any nonlinear system can be approximated by a multiple models representation with sufficient accuracy and this simply by increasing the number of sub-models. In practice, a reduced number of sub-models can be sufficient to obtain a satisfactory

approximation, and we can use the tools of linear systems analysis to achieve this goal.

There are three approaches largely used in the literature allowing us to obtain a TS model: Identification, transformation by nonlinear sectors [26], or linearization. This last one is used in this work (figure 7).

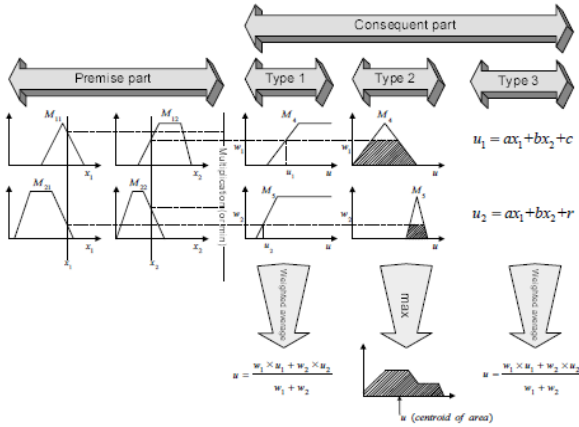


Figure 7 : PDC control for TS multiple models

Using convex analysis for regulator synthesis, the multiple models allows us to obtain control laws by the simultaneous resolution of a finite number of Linear Matrix Inequalities (LMI). In this case, the number of LMI inequalities is polynomial with respect to the number of local models. Thus, it is advisable to minimize the number of local models to limit the conservatism of the method.

In the case of TS multiple models, this technique of regulator synthesis corresponds to the PDC method, It supposes that all the linear sub-models are at least stabilizable. Subsequently, they will also be supposed controlled.

Given the TS model given by equation (13), a control law resulting from PDC synthesis will thus be the combination of linear control laws for each sub-model, given by:

$$u(t) = -\sum_{i=1}^M \mu_i(z(t)) F_i x(t) \tag{14}$$

Applying this control law to the TS multiple model, we obtain in closed loop:

$$\begin{cases} \dot{x}(t) = (A_z - B_z F_z) x(t) \\ y(t) = C_z x(t) \end{cases} \tag{15}$$

Or, in a more explicit way:

$$\dot{x}(t) = \sum_{i=1}^M \sum_{j=1}^M \mu_i(z(t)) \mu_j(z(t)) (A_i - B_i F_j) x(t) \tag{16}$$

The stability conditions for the closed loop system amounts to find a control gain \$F\_j\$ such that the derivative of the candidate Lyapunov function associated with the system is negative. Stabilizing the system thus amounts to solve the following problem:

Find a positive definite matrix \$P\$ and \$F\_i\$ matrices, \$i=1, \dots, M\$ such that:

$$(A_z - B_z F_z)^T P + P (A_z - B_z F_z) < 0 \tag{17}$$

We notice that this inequality is non linear with respect to \$P\$ and \$F\_i\$. By using the congruence of the symmetrical full row matrix:

$$X = P^{-1} \tag{18}$$

We get:

$$X A_z^T + A_z X - X F_z^T B_z^T - B_z F_z X < 0 \tag{19}$$

By using the bijective variable change

$$M_i = F_i X, i = 1, \dots, M, \tag{20}$$

The problem becomes LMI in variables \$X\$ and \$M\_i\$.

$$\gamma_{ij} = X A^T_i - M^T_j B^T_i + A_i X - B_i M_j < 0 \tag{21}$$

We finally get:

$$\sum_{i=1}^M \sum_{j=1}^M \mu_i(z(t)) \mu_j(z(t)) \gamma_{ij} \tag{22}$$

And we can express the following result:

*Theorem 4.1 [24]* Given a continuous TS model, the PDC control law (14) and the \$\gamma\_{ij}\$, if it exists a positive definite matrix \$X\$ and \$M\_i\$ matrices, such that (21) is satisfied for all \$i,j=1, \dots, M\$, then the closed loop is overall asymptotically stable. Moreover, if the problem has a solution, the gains of the PDC control are given by:

$$F_i = M_i X^{-1} \tag{23}$$

And the PDC control is:

$$u(t) = -\sum_{i=1}^M \mu_i(z(t)) F_i x(t) \tag{24}$$

If \$F\_i = F, \forall i = 1, \dots, M\$, then we define a linear control law. In practice, to determine the matrix \$P\$ and the control gain \$F\_i\$, we have to solve (21) for all \$i,j=1, \dots, M\$. In the particular case where the multiple models verify the positive co linearity of the input matrices, this is:

$$B_i = B, \forall i \in I_n \tag{25}$$

The closed loop multiple models system of (16) is rewritten without the crossing terms \$B\_i F\_j\$:

$$\dot{x}(t) = \sum_{i=1}^M \mu_i(z(t)) (A_i - B_i F_i) x(t) \tag{26}$$

The stability conditions of theorem 4.1 reduce then to the stability of the dominant models: \$P > 0\$,

$$(A_i - B_i K_i) P + P (A_i - B_i K_i) < 0, \forall i = 1, \dots, M \tag{27}$$

Substituting \$B\_i\$ by \$B\$, the control law leads to similar conditions.

c) Multiple models identification

The structural identification of a multiple models representation consists in the determination of the local models structures and the operation zones (or validity zones) for each local model [25]. The local models can be of various structures but in general we use simple structures, such as linear models.

The identification leads to a family of functions parameterized by the parameters vector  $\underline{\theta}_i$  defining the structure of the  $i^{\text{th}}$  local model, and the parameters

$$J_G = \frac{1}{2} \sum_{k=1}^N (y_s(t) - \hat{y}(t))^2 = \frac{1}{2} \sum_{k=1}^N \left[ y_s(t) - \sum_{i=1}^M \omega_i(\zeta(t), \underline{\beta}_i) f_i(\varphi(t), \underline{\theta}_i) \right]^2 \tag{28}$$

In order to simplify the model, we choose linear sub-models of ARX type (auto regressive with exogenous inputs) with 3 inputs (system MISO):

- Liquid Flow  $U_l$  [ton/h]
- Gaz flow  $U_g$  [ton/h]

$$C_{gsi}(t+1) = A_{i1}C_{gs}(t) + A_{i2}C_{gs}(t-1) + B_i U_l(t) + C_i U_g(t) + D_i C_{ge}(t) + P_i + e_i(t+1) \tag{29}$$

With:

$i = 1, \dots, M$  : local model indices

$C_{gsi}(t+1)$  : output (concentration of  $\text{CO}_2$ ) of local model  $i$

$e_i(t+1)$  : Gaussian white noise

$A_{i1}, A_{i2}, B_i, C_i, D_i, P_i$  : parameters of local model  $i$

We choose Gaussian membership functions with the decision variable being the system output at time  $t$ .

The expression of the membership function is:

$$\omega_i(C_{gs}(t), [c_i, \sigma]) = \frac{\exp\left[-\frac{(C_{gs}(t)-c_i)^2}{2\sigma^2}\right]}{\sum_{i=1}^M \exp\left[-\frac{(C_{gs}(t)-c_i)^2}{2\sigma^2}\right]} \tag{30}$$

Where  $c_i$  is the mean. and  $\sigma$  the standard deviation for the Gaussian membership function

The global identification diagram is:

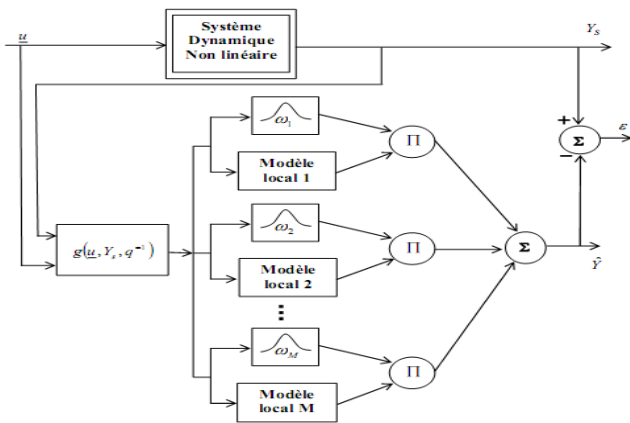


Figure 8 : Structure of the multiple models identification

vector  $\underline{\beta}_i$  characterizing the zone of validity of this local model. The parametric estimate consists in determining for each local model  $i$  the parameters vector:

$$\underline{\Theta}_i = [\underline{\theta}_i^T \quad \underline{\beta}_i^T]^T$$

The parametric estimation (also called training) is done on the basis of minimization of a functional binding the inputs and outputs system to the characteristics parameters of the model.

- Input  $\text{CO}_2$  concentration  $C_{ge}$  [mol%]

The chosen local models are second order ones, they are written in the following form:

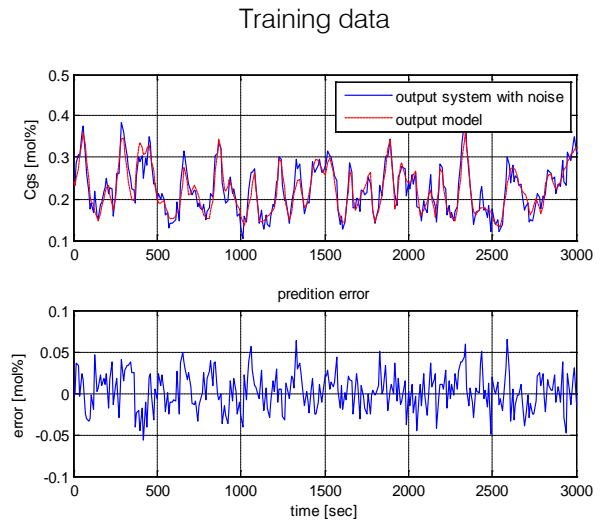


Figure 9 : Training with the ARX structure Validating data

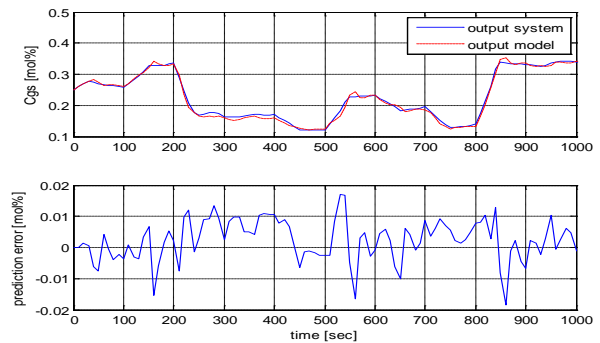


Figure 10 : Validating with the ARX structure



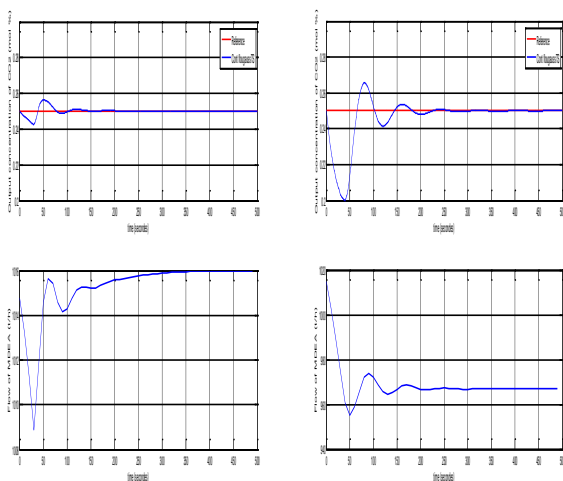


Figure 15 : Output CO<sub>2</sub> Concentration and washing liquid flow for a step input disturbance of ± 10 % on gas flow

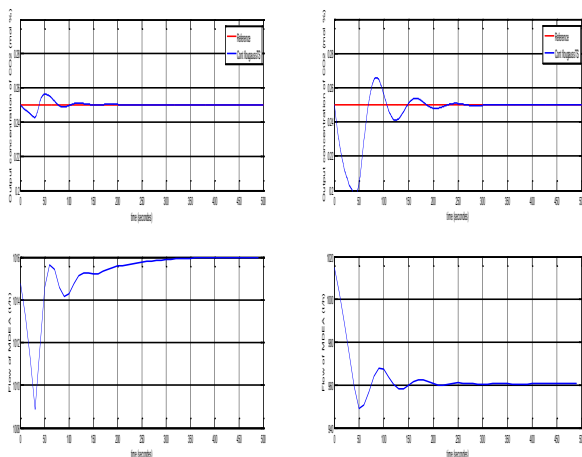


Figure 16 : Output CO<sub>2</sub> Concentration and washing liquid flow for a step input disturbance of ± 5 % on gas concentration and ± 10 % on gas flow

## V. DISCUSSIONS

The oscillations of the output CO<sub>2</sub> concentration for the industrial column are mainly due to fuzzy control, but the operating point of is quickly reached in less than 50 seconds . We note on all the curves (5, 6 and 11-16) that disturbance is always rejected with both PID and ODC regulation. But comparison of the peak values as well as the oscillations show us that ODC control acts more quickly than PID control.

## VI. CONCLUSION

In this paper, a TS multiple models obtained by linearization was used for the regulation of an industrial absorption packed column used for gas washing. We take a reduced number of submodels, four, to ease identification. The results obtained with output

distributed feedback (ODC) are better than those by classical PID regulation, for a method which is not significantly complicated. Further investigations will be undertaken in the use of multiple models in control, multiple observers and multiple models in systems diagnosis.

## REFERENCES RÉFÉRENCES REFERENCIAS

1. A.Selatnia and S. Seddari, "Simulation of CO<sub>2</sub> absorption in aqueous solution of monoethanolamine (MEA) on a pilot absorption column", Distillation and absorption conference, IChemE, London, England, 2006.
2. I. Zidane et H.Zebiri, Identification multimodèle et commande par logique floue d'une colonne d'absorption industrielle. Projet de fin d'études, ENP, Alger, 2010.
3. J.E. Crosby and L.D. Durbin, "Design and application of state variable feedback controller for a packed trickle bed column with carbon dioxide absorption", in Joint Automatic Control Conference, West Lafayette, IN, USA, 1976.
4. B. Roffel, "Control of processes with a state variable inequality constraint", Automatica, Vol.17, 1976, pp. 19-28.
5. M. Darwish and J. Fantin, "Stabilization and control of absorber tower chemical process", Third IFAC/IFIP/IFORS Conference on System Approach for Development, Rabat, 1980.
6. D. Petrovski, "A design scheme for multivariable output constrained PI regulators with applications to absorption column", Automatic Control Theory Applications, Vol. 8, 1980, pp. 61-69.
7. K. Najim, "Modelling and self-adjusting control of an absorption column", International Newspaper of Adaptive Control and Processing Signal, Vol. 5, 1991, pp. 335-345.
8. K. Najim and M. Chtourou, "Multilevel learning control of an absorption column", Optimal control applications & Methods, Vol. 12, n°3, 1991, pp. 189-195.
9. K. Najim and V. Ruiz, "Long range predictive control of an absorption packed column", Applied Mathematical Modelling Journal, Vol. 19, n°1, 1995, pp. 39-45.
10. R. Idem, M. Wilson, P. Tontiwachwuthikul and A. Chakma, "Pilot Plant Studies of the CO<sub>2</sub> Capture Performances of Aqueous MEA and Mixed MEA/MDEA Solvents at the University of Regina CO<sub>2</sub> Capture Technology Development Plant and the Boundary Dam CO<sub>2</sub> Capture Demonstration Plant", Ind. Eng. Chem. Res , Vol. 45, 2006, pp. 2414-242.
11. P. Tontiwachwuthikul, A. Meisen and C.J. Lim, "CO<sub>2</sub> Absorption by NaOH, MEA and AMP solutions to

- packed columns”, *Chemical Engineering Science*, vol. 47, n° 2, 1992, pp. 381-391.
12. T. Pintola, P. Tontiwachwuthikul and A. Meisen, “Simulation of pilot plant and industrial CO<sub>2</sub>-MEA absorbers”, *Gas separation and purification*, Vol. 7, n° 1, 1993, pp. 47-52.
  13. S. Seddari, *Simulation d'une colonne à garnissage d'absorption du CO<sub>2</sub> par une solution aqueuse de monoéthanolamine à 25°C et 40 °C*, Thèse de Magister, ENP, Alger, 2004.
  14. L. Deleye and G.F. Froment, “Rigorous simulation and design of columns for gas absorption and chemical reactions packed columns”, *Comp. Chem. Eng.*, Vol.0, n°5, 1986, pp. 493-504.
  15. P. Trambouze, H.V. Landegheim et J.P Wauquier, *Les réacteurs chimiques, conception/calcul/mise en œuvre*, Paris, Technip, 1984, pp. 217-218.
  16. A.Bedelbayev, T. Greer and B. Lie, “Model based control of absorption tower for CO<sub>2</sub> capturing”, *Telemark University College*, Porsgrunn, Norvège, 2008, p. 11.
  17. Data Sheet ISG. CO<sub>2</sub> absorber.CO<sub>2</sub> control. *Ain Salah Gaz*.
  18. R.Murray-Smith and T. A. Johansen. *Multiple model Approaches to modelling and control*, Taylor & Francis, London, 1997.
  19. D. Orjuela, B. Marx, J. Ragot and D. Maquin. *Conception d'observateurs robustes pour des systèmes non linéaires incertains: une stratégie multimodèle*, Conférence Internationale Francophone d'Automatique, CIFA 2008.
  20. D. Ichallal, B. Marx, J. Ragot and D. Maquin. *Diagnostic des systems non linéaires par approche multimodèle*, Workshop Surveillance, Sûreté et sécurité des grands systèmes, 3 SGS 08, Troyes, France, 2008.
  21. T. Takagi and M. Sugeno. *Fuzzy identification of systems and its application to modelling and control*, *IEEE Trans. On systems Man and Cybernetic*, Volume 15, 1985, pp.116-132.
  22. H. O. Wang, K. Tanaka and M. F. Griffin. *An approach to fuzzy control of nonlinear systems: stability & design issues*, *IEEE Trans. On Fuzzy Systems*, Volume 4, N°1, 1996, pp.14-23.
  23. T. M. Guerra and L. Vermeiren. *LMI- based relaxed nonquadratic stabilization condition for nonlinear systems in the Takagi-Sugeno's form*, *Automatica*, Volume 40, N°5, 2004, pp.823-829.
  24. H. O. Wang, K. Tanaka and M. F. Griffin. *Parellel Distributed Compensation on nonlinear systems by Takagi-Sugeno fuzzy model*, *Proc. Of the Fuzzy – IEEE/IFES'95*, 1995.
  25. R. Orjuela. D. Maquin and J.Ragot. *identification des systèmes non linéaire par une approche multimodèle à états découplés*, *Journées Identification et Modélisation Expérimentale JIME*, Poitiers, France 2006.
  26. D. Ichalal. *Estimation et diagnostic des systèmes nonlinéaire décrits par des modèles de Takagi-Sugeno*, Thèse de doctorat, Centre de recherche en automatique de Nancy, INPL, France, 2009.

This page is intentionally left blank